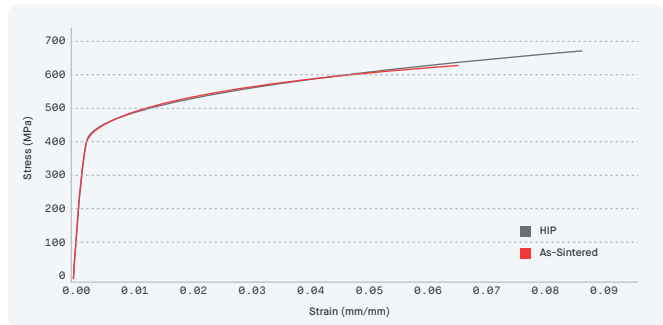


[Material Data Sheet]

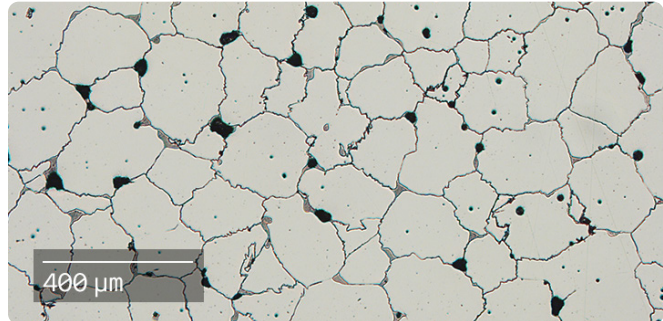
CoCrMo

Cobalt Chrome



COMPOSITION %

Co	Balance
Cr	27 - 30
Mo	5 - 7
Mn	<1
Si	<1.3
Fe	<0.75
Ni	<0.5
C	<0.35
N	<0.25



MECHANICAL PROPERTIES ¹

	Standard	Shop System™ As-Sintered	ISO 22674 type 4	Shop System™ Sintered and HIP ²	ASTM F75 as cast
Ultimate tensile strength - xy (MPa)	ASTM E8M	600 ± 13	—	672 ± 21	655
Yield strength - xy (MPa)	ASTM E8M	424 ± 11	360	445 ± 9	450
Elongation - xy (%)	ASTM E8M	6.0 ± 2.0	2	8.5 ± 1.9	8
Young's modulus - xy (GPa)	ASTM E111	231 ± 7	—	231 ± 7	—
Hardness (HRC)	ASTM E18	17.9 ± 2.2	—	22.5 ± 0.9	—
Density (g/cc)	ASTM B311	8.0 ± 0.1	—	8.28 ± 0.02	—

ATTRIBUTES & APPLICATIONS

Dental industry
 High temperature applications (e.g. fuel nozzles)
 Jewelry

OTHER STANDARD DESIGNATIONS ³

Cobalt-28 Chromium-6 Molybdenum
 ASTM F75
 UNS R30075
 ISO 5832-4

1. Mechanical properties noted represent mean values +/- 1 standard deviation across Xy & Yz orientations for as-printed samples.
 2. Samples were hot isostatic pressed at 1200C in 1000 bar argon for 4 hours.
 3. Listed designations are for reference purposes only. Composition and mechanical properties may vary.
 End-use material performance is impacted (+/-) by certain factors including but not limited to part geometry and design, application and evaluation conditions, etc.